

## Synaptophysin clone SYP/4503R

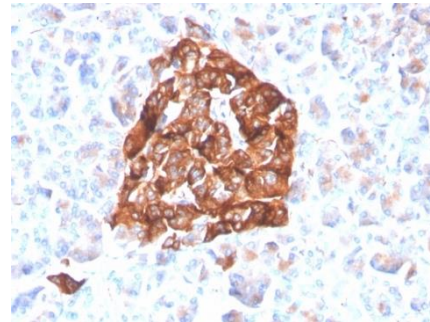
### Instructions For Use

**Specification:**

This recombinant rabbit monoclonal antibody recognizes a protein of 38kDa that is identified as synaptophysin. It is an N-glycosylated integral membrane protein found in neurons and endocrine cells. Synaptophysin contains four transmembrane domains and may function as a gap junction-like channel. This antibody identifies normal neuroendocrine cells and neuroendocrine neoplasms. Diffuse, finely granular, cytoplasmic staining is observed, which probably correlates with the distribution of the antigen within neurosecretory vesicles. Synaptophysin is an independent, broad-range marker of neural and neuroendocrine differentiation.

**Availability:**

| Catalog No. | Contents      | Volume |
|-------------|---------------|--------|
| ILM6855-C01 | Synaptophysin | 0,1 ml |
| ILM6855-C05 | Synaptophysin | 0,5 ml |
| ILM6855-C1  | Synaptophysin | 1,0 ml |



**Intended use:** For Research Use Only

**Reactivity:** Human

**Clone:** SYN/4503R

**Species of origin:** Rabbit

**Isotype:** IgG

**Control Tissue:** HepG2, HeLa or Y79 cells. Human pancreas, cerebellum or pheochromocytoma.

**Staining:** Cytoplasmic

**Presentation:** Anti-Cytokeratin 5 & 6 antibody is a cocktail of two mouse monoclonals from ascites diluted in tris buffered saline, pH 7.3-7.7, with protein base, and preserved with sodium azide

**Application and suggested dilutions:**

Pretreatment: Heat induced epitope retrieval in 10 mM citrate buffer, pH6.0, or in 50 mM Tris buffer pH9.5, for 20 minutes is required for IHC staining on formalin-fixed, paraffin embedded tissue sections.

- Immunohistochemical staining of cryostat tissue sections (dilution up to 1:100 – 1:200)
- Immunohistochemical staining of formalin-fixed, paraffin embedded tissue section (dilution up to 1:100 – 1:200)

The optimal dilution for a specific application should be determined by the investigator.

**Note:** Dilution of the antibody in 10% normal goat serum followed by a goat anti-rabbit secondary antibody-based detection is recommended.

**Storage & Stability:** Store at 2-8 °C. Do not use after expiration date printed on the vial.

**References:**

- 1) Wiedenmann B, et al. Identification and localization of synaptophysin, an integral membrane glycoprotein of Mr 38,000 characteristic of presynaptic vesicles. Cell. 1985; 41:1017-28