

## Napsin A clone NAPSA/1239

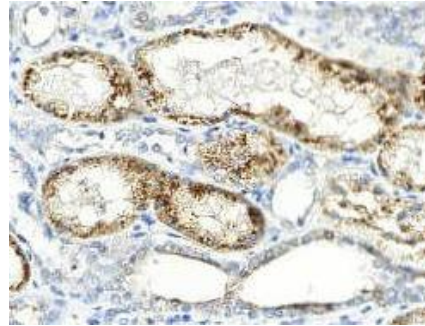
### Instructions for Use

**Specification:**

Napsin is a pepsin-like aspartic proteinase connected with maturation of surfactant protein B. There are two closely related Napsin, Napsin A and Napsin B. Napsin A is expressed as a single chain protein. Immunohistochemical studies revealed high expression levels of Napsin A in human lung and kidney but low expression in spleen. Napsin A is expressed in type II pneumocytes and in adenocarcinomas of lung. The high specificity expression of Napsin A in adenocarcinomas of lung is useful to distinguish primary lung adenocarcinomas from adenocarcinomas of other organs.

**Availability:**

Catalog No.	Contents	Volume
ILM9479-C1	Napsin A	0,1 ml concentrate
ILM9479-C05	Napsin A	0,5 ml concentrate
ILM9479-C1	Napsin A	1,0 ml concentrate



**Intended use:** For Research Use Only

**Reactivity:** Human

**Clone:** NAPSA/1239

**Species of origin:** Mouse

**Isotype:** IgG, Kappa

**Control Tissue:** Lung adenocarcinoma

**Staining:** Cytoplasmic

**Immunogen:** Recombinant fragment of human Napsin A protein

**Presentation:** Antibody in Bioreactor Concentrate with 0.05% BSA and 0.05% Azide.

**Application and suggested dilutions:**

Pretreatment: Heat induced epitope retrieval in 10 mM citrate buffer, pH6.0, for 20 minutes is required for IHC staining on formalin-fixed, paraffin embedded tissue sections.

- Immunohistochemical staining of formalin-fixed, paraffin embedded tissue section (dilution 1:100 - 1:200)

The optimal dilution for a specific application should be determined by the investigator.

**Note:** Dilution of the antibody in 10% normal goat serum followed by a goat anti-mouse secondary antibody-based detection is recommended.

**Storage & Stability:** Store at 2-8 °C. Do not use after expiration date printed on the vial.

**References:**

- 1) Bishop, JA et. Al. Hum Pathol 41: 20-25
- 2) Ordonez, NG 2012 Adv Anat Payhol 19: 66-73
- 3) Ye, J et. Al. Appl Immunohistochem Mol Morphol 19: 313-317