

Estrogen Receptor clone ZR2

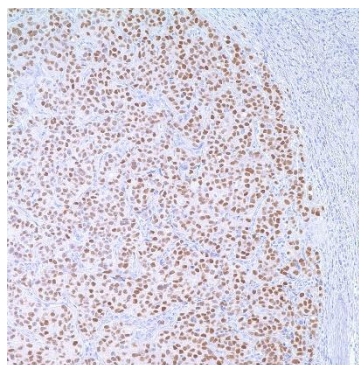
Instructions for Use

Specification:

Recognizes a protein of 67kDa, which is identified as estrogen receptor (ER) alpha. The ER gene consists of more than 140kb of genomic DNA divided into 8 exons, being translated into a protein with six functionally discrete domains, labeled A through F. This antibody strongly stains the nucleus of epithelial cells in breast carcinomas. The ER is an important regulator of growth and differentiation in the mammary gland. Presence of ER in breast tumors indicates an increased likelihood of response to antiestrogen (e.g. tamoxifen) therapy.

Availability:

Catalog No.	Contents	Volume
ILM2022-C01	Estrogen Receptor	0,1 ml concentrate
ILM2022-C05	Estrogen Receptor	0,5 ml concentrate
ILM2022-C01	Estrogen Receptor	1,0 ml concentrate



Intended use: For Research Use Only

Reactivity: Human

Clone: ZR2

Species of origin: Rabbit

Isotype: IgG

Control Tissue: Breast carcinoma

Staining: Nuclear

Immunogen: A synthetic peptide corresponding to residues on the C-terminus of human ER- α

Presentation: Rabbit monoclonal antibody. Tissue culture supernatant with 0.2% BSA and 15mM sodium azide

Application and suggested dilutions:

Pretreatment: Heat induced epitope retrieval in 10 mM citrate buffer, pH6.0, or in 50 mM Tris buffer pH9.5, for 20 minutes is required for IHC staining on formalin-fixed, paraffin embedded tissue sections.

- Immunohistochemical staining of formalin-fixed, paraffin embedded tissue section (dilution up to 1:100-1:200)

The optimal dilution for a specific application should be determined by the investigator.

Note: Dilution of the antibody in 10% normal goat serum followed by a goat anti-rabbit secondary antibody-based detection is recommended.

Storage & Stability: Store at 2-8 °C. Do not use after expiration date printed on the vial.