

## Cytokeratin clone MNF116

### Instructions for Use

**Specification:**

This antibody recognizes cytoke­ratin polypeptides ranging from 40 through 58kD, corresponding to cytoke­ratin's 5, 6, 8,17, and 19. It shows a broad pattern of reactivity with human epithelial tissues from simple glandular epithelia to stratified squamous epithelia, like epidermis, mammary gland ducts, and tracheal epithelium.

**Availability:**

Catalog No.	Contents	Volume
ILM2225-C1	Cytokeratin	0,1 ml concentrate
ILM2225-C05	Cytokeratin	0,5 ml concentrate
ILM2225-C01	Cytokeratin	1,0 ml concentrate

**Intended use:** For Research Use Only

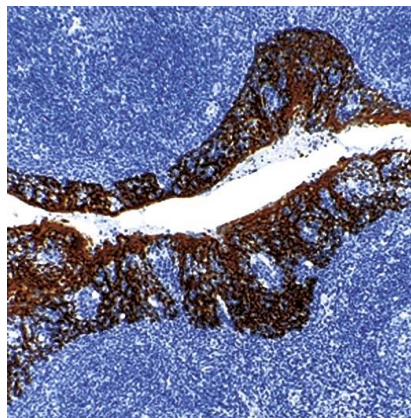
**Reactivity:** Human

**Clone:** MNF116

**Species of origin:** Mouse

**Isotype:** IgG1/K

**Control Tissue:** Skin



**Staining:** Cytoplasmic

**Immunogen:** Crude extract of splenic cells from a nude mouse engrafted with MCF-7 cells

**Presentation:** This antibody is supplied as tissue culture supernatant containing sodium azide as a preservative

**Application and suggested dilutions:**

Pre-treatment: Enzymatic predigestion is required for IHC staining on formalin-fixed, paraffin embedded tissue sections.

- Immunohistochemical staining of formalin-fixed, paraffin embedded tissue section (dilution up to 1:50-1:100)

The optimal dilution for a specific application should be determined by the investigator.

**Note:** Dilution of the antibody in 10% normal goat serum followed by a goat anti-mouse secondary antibody-based detection is recommended.

**Storage & Stability:** Store at 2-8 °C. Do not use after expiration date printed on the vial.

**References:**

- 1) Gatter et al. J Clin Pathol 35: 1253, 1982.
- 2) Gosh et al. Br J Haematol 61: 21, 1985.
- 3) Norton et al. Histopathol 11: 487, 1987.