

## CD31/PECAM-1 clone MX032

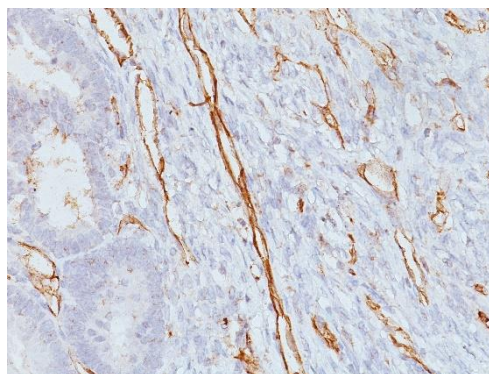
### Instructions for Use

**Specification:**

CD31 is a transmembrane glycoprotein, 130-140 kDa, also designated platelet-endothelium cell adhesion molecule = PECAM-1, belonging to the immunoglobulin super family. CD31 is ligand for CD38 and plays a role in thrombosis and angiogenesis. CD31 is strongly expressed in endothelial cells and weakly expressed in megakaryocytes, platelets, occasional plasma cells, lymphocytes (esp. marginal zone B-cells, peripheral T-cells) and neutrophils.

**Availability:**

Catalog No.	Contents	Volume
ILM7200-C01	CD 31	0,1 ml concentrate
ILM7200-C05	CD 31	0,5 ml concentrate
ILM7200-C1	CD 31	1,0 ml concentrate



**Intended use:** For Research Use Only

**Reactivity:** Human

**Human Gene Symbol:** PECAM1

**Synonyms:** CD31

**Human Entrez Gene ID:** 5175

**Clone:** MX032

**Species of origin:** Mouse

**Isotype:** IgG

**Control Tissue:** Tonsil

**Staining:** Membranous

**Presentation:** Tissue culture supernatant containing 15mM sodium azide.

**Application and suggested dilutions:**

Pre-treatment: Heat induced epitope retrieval in 10 mM citrate buffer, pH6.0 for 20 minutes is required for IHC staining on formalin-fixed, paraffin embedded tissue sections.

- Immunohistochemical staining of formalin-fixed, paraffin embedded tissue section (dilution 1:100 - 1:200)

The optimal dilution for a specific application should be determined by the investigator.

**Note:** Dilution of the antibody in 10% normal goat serum followed by a goat anti-mouse secondary antibody-based detection is recommended.

**Storage & Stability:** Store at 2-8 °C. Do not use after expiration date printed on the vial.

**References:**

- 1) Santonja C, Martin-Hita AM, Dotor A, et al., Virchows Arch 2001;438:404-7
- 2) Marquez WH, Gomez-Hoyos J, Woodcock S, et al., Hip Int 2015; 25:168-71