

Inhibin Alpha clone INHA/4265

Mouse Monoclonal Antibody

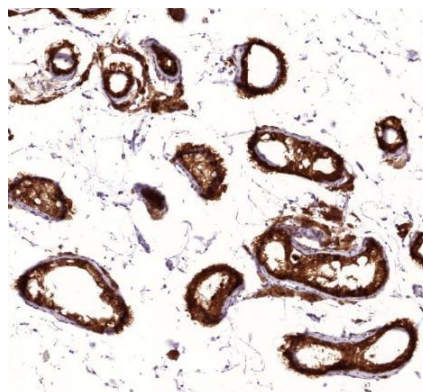
Instruction for Use

Specification:

It recognizes a 47kDa protein, which is identified as alpha sub-unit of Inhibin. It is a gonadal protein that preferentially suppresses the secretion of pituitary follicle-stimulating hormone (FSH). Inhibin comprises two subunits, Inhibin A and Inhibin B. Each subunit consists of the same subunit, covalently linked to 1 of 2 distinct subunits, - or -. Originally isolated from ovarian follicular fluid and characterized as a disulphide-linked dimeric glycoprotein, inhibin belongs to the transforming growth factor (TGF) superfamily. Antibodies against Inhibin are useful in making a differentiation between adrenal cortical tumors and renal cell carcinoma. Sex cord stromal tumors of the ovary as well as trophoblastic tumors also demonstrate cytoplasmic positivity. Inhibin antibody is also used to make the differential diagnosis of intra-uterine vs. ectopic pregnancy in endometrial curetting.

Availability:

Catalog No.	Contents	Volume
ILM3623-C01	Inhibin Alpha	0,1 ml concentrate
ILM3623-C05	Inhibin Alpha	0,5 ml concentrate
ILM3623-C1	Inhibin Alpha	1,0 ml concentrate



Intended use: For Research Use Only

Reactivity: Human

Clone: INHA/4265

Species of origin: Mouse

Isotype: IgG_{2a}

Human Entrez Gene ID: 3623

Human SwissProt: P05111

Human chromosome location: 407506

Control Tissue: Prostate or testis

Staining: Nuclear and membranous

Immunogen: A synthetic peptide (around aa 73-96) of α -subunit of human inhibin A protein (exact sequence is proprietary)

Presentation: Bioreactor Concentrate with 0.05% Azide

Application and suggested dilutions:

Pre-treatment: Heat induced epitope retrieval in 10 mM citrate buffer, pH6.0 is required for IHC staining on formalin-fixed, paraffin embedded tissue sections.

- Immunohistochemical staining of formalin-fixed, paraffin embedded tissue section (dilution 1:100-1:200)

The optimal dilution for a specific application should be determined by the investigator.

Note: Dilution of the antibody in 10% normal goat serum followed by a Goat anti-Mouse secondary antibody-based detection is recommended.

Storage & Stability: Store at 2-8 °C. Do not use after expiration date printed on the vial.

Reference:

- 1) Balanathan, P., et al. (2009) Elevated level of inhibin- α subunit is pro- tumourigenic and pro- metastatic and associated with extracapsular spread in advanced prostate cancer. British Journal of Cancer, 100(11), 1784-1793.