

## CD19 clone CD19/4260R

Recombinant Rabbit Monoclonal antibody

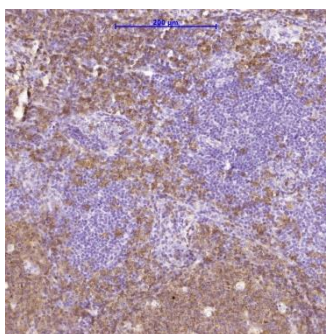
### Instructions for Use

#### Specification:

CD19 is a transmembrane glycoprotein that contains two extracellular immunoglobulin-like domains. CD19 is present in both benign and malignant B-cells and is considered to be the reliable surface marker of this lineage over a wide range of maturational stages. In normal lymphoid tissue, CD19 is observed in germinal centers, in mantle zone cells and in scattered cells of the inter-follicular areas. Anto-CD19 exhibits an overall immunoreactivity pattern similar to those of the antibodies against CD20 and CD22. However in contrast to CD20, expression of CD19 is continuous throughout B-Cell development and trough terminal differentiation of B-cells into plasma cells. Anti-CD19 positivity is seen in the vast majority of B-cells neoplasms commonly at a lower intensity than normal B-cell counterparts. Plasma cell neoplasm are nearly always negative, as are t-cells neoplasms.

#### Availability:

Catalog No.	Contents	Volume
ILM4260-C01	CD19	0,1 ml concentrate
ILM4260-C05	CD19	0,5 ml concentrate
ILM4260-C1	CD19	1,0 ml concentrate



**Intended use:** For Research Use Only

**Reactivity:** Human

**Human Gene Symbol:** CD19

**Synonyms:** B-lymphocyte antigen CD19; B-lymphocyte surface antigen B4; CVID3; Leu-12; T-cell surface antigen Leu-12

**Human Entrez Gene ID:** 930

**Clone:** CD19/4260R

**Species of origin:** Rabbit

**Isotype:** IgG

**Control Tissue:** Raji cells, human tonsil, lymph node or spleen

**Staining:** Membranous

**Presentation:** : Bioreactor Concentrate with 0.05% BSA and 0.05% Azide

#### Application and suggested dilutions:

Pre-treatment: Heat induced epitope retrieval in 10 mM citrate buffer pH6.0 for 20 minutes is required for IHC staining on formalin-fixed, paraffin embedded tissue sections.

- Immunohistochemical staining of formalin-fixed, paraffin embedded tissue section (dilution 1:100 - 1:200)

The optimal dilution for a specific application should be determined by the investigator.

**Note:** Dilution of the antibody in 10% normal goat serum followed by a goat anti-Rabbit secondary antibody-based detection is recommended.

**Storage & Stability:** Store at 2-8 °C. Do not use after expiration date printed on the vial.

#### References:

- 1) Bregni, M, et al. 1989. Blood 73 : 753-762