

# Helicobacter Pylori

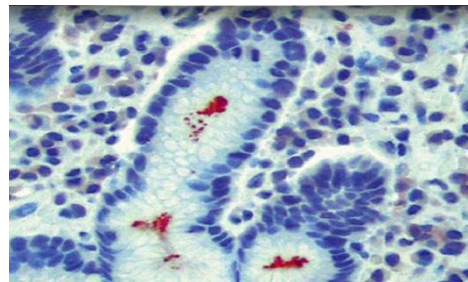
## Instructions for Use

### Specification:

Anti-H. pylori antibody reacts with H. pylori typically found on the surface of pyloric and stomach mucosa. Studies have shown that H. pylori plays an important role in the ethology of chronic gastritis and the development of peptic ulcer disease.

### Availability:

Catalog No.	Contents	Volume
ILP4343-C01	Helicobacter pylori	0,1 ml concentrate
ILP4343-C05	Helicobacter pylori	0,5 ml concentrate
ILP4343-C1	Helicobacter pylori	1,0 ml concentrate



**Intended use:** For Research Use Only

**Clone:** -

**Species of origin:** Rabbit

**Control Tissue:** H. Pylori infected stomach tissue

**Staining:** Complete microorganism

**Presentation:** Anti-Helicobacter pylori is a rabbit polyclonal antibody purified from rabbit anti-sera diluted in tris buffered saline, pH 7.3-7.7, with protein base, and preserved with sodium azide

### Application and suggested dilutions:

Pre-treatment: Heat induced epitope retrieval in 10 mM citrate buffer, pH6.0, or in 50 mM Tris buffer pH9.5, for 20 minutes is required for IHC staining on formalin-fixed, paraffin embedded tissue sections.

- Immunohistochemical staining of cryostat tissue sections (dilution up to 1:200-1:1000)
- Immunohistochemical staining of formalin-fixed, paraffin embedded tissue section (dilution up to 1:200-1:1000)

The optimal dilution for a specific application should be determined by the investigator.

**Note:** Dilution of the antibody in 10% normal goat serum followed by a goat anti-rabbit secondary antibody-based detection is recommended.

**Storage & Stability:** Store at 2-8 °C. Do not use after expiration date printed on the vial.

### References:

- 1) Toulaymat M, et al, Arch Pathol Lab Med 1999 Sep;123(9):778-81
- 2) Cartun, RW, et al, Modern Pathology Vol. 4, No. 4, p. 498-502, 1991
- 3) Shimizu T, et al, Helicobacter 1996 Dec;1(4):197-206
- 4) Jhala NC, et al, Am J Clin Pathol. 2003; 119:101-107