

Calretinin

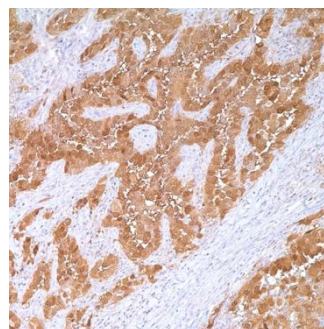
Instructions for Use

Specification:

Anti-calretinin has been shown to be useful in differentiating mesothelioma from adenocarcinomas from the lung and other sources. Anti-calretinin has also demonstrated utility in differentiating adrenal cortical neoplasms from pheochromocytomas.

Availability:

Catalog No.	Contents	Volume
ILP2303-C01	Calretinin	0,1 ml concentrate
ILP2303-C05	Calretinin	0,5 ml concentrate
ILP2303-C1	Calretinin	1,0 ml concentrate



Intended use: For Research Use Only

Reactivity: Human

Clone: -

Species of origin: Rabbit

Isotype: IgG

Control Tissue: Adrenal gland, benign mesothelioma cells, malignant mesothelioma

Staining: Cytoplasmic, nuclear

Presentation: antibody in Tris-buffer pH 7.3 -7.7, with 1% BSA and <0.1% Sodium azide

Application and suggested dilutions:

Pre-treatment: Heat induced epitope retrieval in 10 mM citrate buffer, pH6.0, or in 50 mM Tris buffer pH9.5, for 20 minutes is required for IHC staining on formalin-fixed, paraffin embedded tissue sections.

- Immunohistochemical staining of cryostat tissue sections (dilution 1:100-1:500)
- Immunohistochemical staining of formalin-fixed, paraffin embedded tissue section (dilution 1:100-1:500)

The optimal dilution for a specific application should be determined by the investigator.

Note: Dilution of the antibody in 10% normal goat serum followed by a goat anti-rabbit secondary antibody-based detection is recommended.

Storage & Stability: Store at 2-8 °C. Do not use after expiration date printed on the vial.

References:

- 1) Rogers JH. Calretinin: J Cell Biol. 1987; 105:1343-53.
- 2) Doglioni C, et al. Am J Surg Pathol. 1996; 20:1037-46.
- 3) Augusto D, et al... Appl Immunohistochem Mol Morphol. 2002; 10:159-62.
- 4) Barberis MC, et al. Acta Cytol. 1997; 41:1757-61.
- 5) Ordóñez NG. Am J Surg Pathol. 2003; 27:1031-51.
- 6) Abutaily AS, et al. J Clin Pathol. 2002; 55:662-8