

Cytokeratin 20 (clone E19-1)

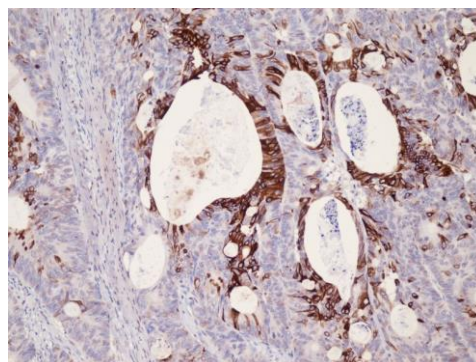
Instructions for Use

Specification:

Keratin 20 / cytokeratin20 (CK20) is a type-I keratin which is primarily expressed in gastric and intestinal epithelium, urothelium, and Merkel-cells. CK20 is expressed in adenocarcinomas of the colon, stomach, pancreas and the bile system. CK20 is also present in mucinous ovarian tumours, transitional-cell and Merkel-cell carcinomas.

Availability:

| Catalog No. | Contents | Volume |
|-------------|----------------|--------------------|
| ILM2133-C01 | Cytokeratin 20 | 0,1 ml concentrate |
| ILM2133-C05 | Cytokeratin 20 | 0,5 ml concentrate |
| ILM2133-C1 | Cytokeratin 20 | 1,0 ml concentrate |



Intended use: For Research Use Only

Reactivity: Human

Clone: E19-1

Species of origin: Rabbit

Isotype: IgG

Control Tissue: Colon Adenocarcinoma, Merkel cell carcinoma

Staining: Cytoplasmic

Immunogen: Peptide derived from C-terminal region of human cytokeratin 20

Presentation: monospecific rabbit clonal antibody in 20 mM Tris-HCl, pH 8.0 with 20 mg/ml BSA and 0.05% Na₃N

Application and suggested dilutions:

Pretreatment: Heat induced epitope retrieval in 10 mM citrate buffer, pH6.0 for 20 minutes is required for IHC staining on formalin-fixed, paraffin embedded tissue sections.

- Immunohistochemical staining of formalin-fixed, paraffin embedded tissue section (dilution 1:800-1:1600)

The optimal dilution for a specific application should be determined by the investigator.

Note: Dilution of the antibody in 10% normal goat serum followed by a goat anti-rabbit secondary antibody-based detection is recommended.

Storage & Stability: Store at 2-8 °C. Do not use after expiration date printed on the vial.