

## CD5 clone C5/473

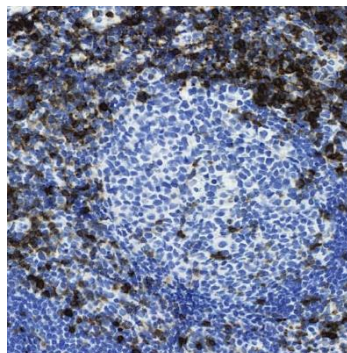
### Instructions for Use

#### Specification:

Recognizes a 67kDa transmembrane protein, which is identified as CD5. The CD5 antigen is found on 95% of thymocytes and 72% of peripheral blood lymphocytes. In lymph nodes, the main reactivity is observed in T cell areas. CD5 is expressed by many T cell leukemia, lymphomas, and activated T cells. Occasionally, CD5 antigen is also expressed on a subset of B cells. Mantle cell lymphomas (same as diffuse centrocyte lymphomas) are CD5+ while the follicle center cell lymphoma is CD5-negative. This MAb is superb for identifying the formalin-fixed, paraffin-embedded mantle cell lymphomas.

#### Availability:

Catalog No.	Contents	Volume
ILM9229-C1	CD5	0,1 ml concentrate
ILM9229-C05	CD5	0,5 ml concentrate
ILM9229-C01	CD5	1,0 ml concentrate



**Intended use:** For Research Use Only

**Reactivity:** Human

**Clone:** C5/473

**Species of origin:** Mouse

**Isotype:** IgG1 kappa

**Control Tissue:** Tonsil

**Staining:** Membranous

**Immunogen:** Human CD5 recombinant protein

**Presentation:** Bioreactor Concentrate with 0.05% azide

#### Application and suggested dilutions:

Pretreatment: Heat induced epitope retrieval in 10 mM citrate buffer, pH6.0, for 20 minutes is required for IHC staining on formalin-fixed, paraffin embedded tissue sections.

- Immunohistochemical staining of formalin-fixed, paraffin embedded tissue section (dilution up to 1:200-1:400)

The optimal dilution for a specific application should be determined by the investigator.

**Note:** Dilution of the antibody in 10% normal goat serum followed by a goat anti-mouse secondary antibody-based detection is recommended.

**Storage & Stability:** Store at 2-8 °C. Do not use after expiration date printed on the vial.

#### Reference:

- 1) Ferry JA et. al. American Journal of Clinical Pathology, 1996, 105(1):31-7.
- 2) Gagneten D et. al. Diagnostic Cytopathology, 1996, 14(1):32-7.