

CD 31 clone C31.3

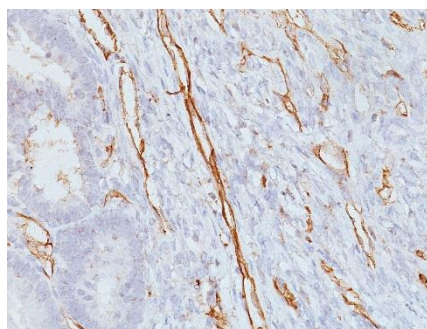
Instructions for Use

Specification:

CD31 (PECAM-1) is a transmembrane glycoprotein member of the immunoglobulin supergene family of adhesion molecules. It is widely used as an endothelial cell marker. CD31 Ab reacts with normal, benign, and malignant endothelial cells which make up blood vessel lining. The level of CD31 expression can help to determine the degree of tumor angiogenesis, and a high level of CD31 expression may imply a rapidly growing tumor and potentially a predictor of tumor recurrence.

Availability:

Catalog No.	Contents	Volume
ILM7529-C01	CD 31	0,1 ml concentrate
ILM7529-C05	CD 31	0,5 ml concentrate
ILM7529-C1	CD 31	1,0 ml concentrate



Intended use: For Research Use Only

Reactivity: Human

Clone: C31.3

Species of origin: Mouse

Isotype: IgG1/ κ

Control Tissue: Tonsil , Angiosarcoma

Staining: Cytoplasmic, Membranous

Immunogen: Human recombinant CD31 protein

Presentation: Bioreactor Concentrate with 0.05% Azide

Application and suggested dilutions:

Pre-treatment: Heat induced epitope retrieval in 1mM Tris-EDTA, pH 9.0, for 20 minutes is required for IHC staining on formalin-fixed, paraffin embedded tissue sections.

- Immunohistochemical staining of formalin-fixed, paraffin embedded tissue section (dilution 1:150 - 1:300)
- Western Blotting (dilution 1:75 – 1:150)

The optimal dilution for a specific application should be determined by the investigator.

Note: Dilution of the antibody in 10% normal goat serum followed by a goat anti-mouse secondary antibody-based detection is recommended.

Storage & Stability: Store at 2-8 °C. Do not use after expiration date printed on the vial.

References:

- 1) Gratzinger D *et. al.* Am J Clin Pathol 131:264-278 (2009).