

## CD 10 clone 56C6

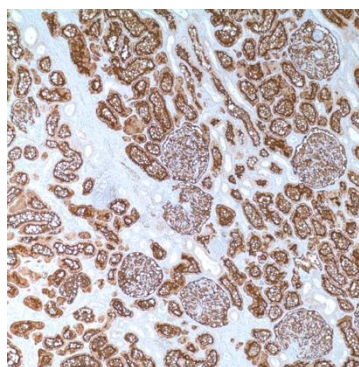
### Instructions for Use

**Specification:**

Common acute lymphoblastic leukemia antigen (CALLA / CD10) is a useful marker for the characterization of childhood leukemia and B cell lymphomas. This antibody reacts with antigen of lymphoblastic, Burkitt's, and follicular lymphomas; and chronic myelocytic leukemia. Also, Anti-CD10 detects the antigen of glomerular epithelial cells and the brush border of the proximal tubules; this characteristic may be helpful in interpreting renal ontogenesis in conjunction with other markers. Other non-lymphoid cells that are reactive with CD10 are breast myoepithelial cells, bile canaliculi, neutrophils and small population of bone marrow cells, fetal small intestine epithelium, and normal fibroblasts. Recently Anti-CD10 has been used to classify follicular thyroid lesions.

**Availability:**

Catalog No.	Contents	Volume
ILM1103-C01	CD 10	0,1 ml concentrate
ILM1103-C05	CD 10	0,5 ml concentrate
ILM1103-C1	CD 10	1,0 ml concentrate



**Intended use:** For Research Use Only

**Reactivity:** Human

**Clone:** 56C6

**Species of origin:** Mouse

**Isotype:** IgG1

**Control Tissue:** Kidney, lymph node, tonsil

**Staining:** Cytoplasmic, membranous

**Presentation:** Anti-CD10 is a mouse monoclonal antibody in tissue culture supernatant containing 15mM sodium azide

**Application and suggested dilutions:**

Pretreatment: Heat induced epitope retrieval in 50 mM Tris buffer pH9.5, for 20 minutes is required for IHC staining on formalin-fixed, paraffin embedded tissue sections.

- Immunohistochemical staining of cryostat tissue sections (dilution up to 1:200-1:400)
- Immunohistochemical staining of formalin-fixed, paraffin embedded tissue section (dilution up to 1:200-1:400)

The optimal dilution for a specific application should be determined by the investigator.

**Note:** Dilution of the antibody in 10% normal goat serum followed by a goat anti-mouse secondary antibody-based detection is recommended.

**Storage & Stability:** Store at 2-8 °C. Do not use after expiration date printed on the vial.

**References:**

1. Haralambidou S, et al. J Clin Pathol. 1987; 40: 490-493
2. Mechterscheimer, et al. Am J of Pathol 1989; 134(5): 961-965
3. Hoefnagel JJ et al. Br J Dermatol. 2003 Dec;149(6): 1183-91
4. Sasaoka A et al. Clin Nephrol. 2003 Nov;60(5): 305-14
5. Hans CP et al. Blood. 2004 Jan 1;103(1): 275-82
6. Tomoda C et al. Thyroid 2003 Mar;13(3): 291-5
7. Hedvat CV et al. Hum Pathol. 2002 Oct;33(10): 968-74
8. Yang B et al. Diagn Cytopathol. 2002 Sep;27(3): 149-52
9. Xu Y et al. Mod Pathol. 2002 Apr;15(4): 413-9