

CD 4 (Clone SP35)

Specification:

CD4, a single chain transmembrane glycoprotein, is found on a T cell subset (helper/inducer) representing 45% of peripheral blood lymphocytes. It is also present on 80% of the thymocytes and at a lower level on monocytes. It is involved in recognition of antigen presented along with MHC class II by APC's. It serves as a receptor for HIV.

Availability:

Catalog No.	Contents	Volume
ILM 5542 C1	CD 4	1,0 ml
ILM 5542 C01	CD 4	0,1 ml

Intended use: For research use only

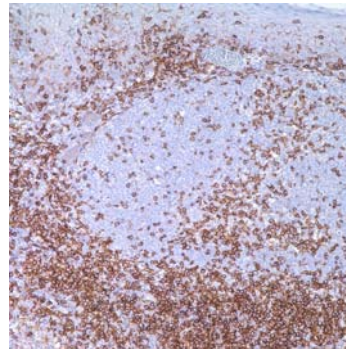
Clone: SP35

Species of origin: Rabbit

Isotype: IgG

Controle Tissue: Tonsil

Staining: Cell membrane



Presentation:

1.0ml purified rabbit antibody in 10mM PBS, pH 7,4 with base and sodium azide.

Application and suggested dilutions:

Pretreatment: Heat induced epitope retrieval in 10 mM citrate buffer , pH6.0, or in 50 mM Tris buffer pH9.5, for 20 minutes is required for IHC staining on formalin-fixed, paraffin embedded tissue sections.

- Immunohistochemical staining of formaline-fixed, paraffin embedded tissue section (dilution up to 1:50)
The optimal dilution for a specific application should be determined by the investigator.

Note: Dilute the antibody in 10% normal goat serum followed by a goat anti-mouse secondary antibody based detection is recommended

Storage & Stability: Store at 2-8 °C. Do not use after expiration date printed on the vial.