

CD 31 (Clone UC-CD31)

Specification:

CD31 is expressed by stem cells of the haematopoetic system and is primarily used to identify and concentrate these cells for experimental studies as well as for bone marrow transplantation. Endothelial cells also express this marker, therefore, antibodies to CD31 have been used as a tool to identify the vascular origin of neoplasms. CD31 has shown to be highly specific and sensitive for vascular endothelial cells. Staining of non-vascular tumors (excluding haematopoetic neoplasms) has not been observed

Availability:

Catalog No.	Contents	Volume
ILM 33811 C1	CD 31	1,0 ml

Intended use: For research use only

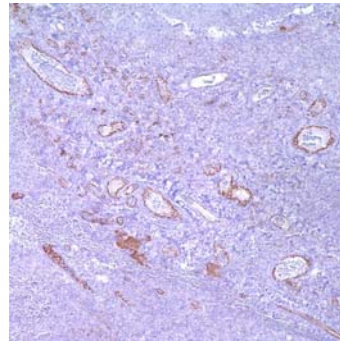
Clone: UC-CD31

Species of origin: Mouse

Isotype: IgG1

Controle Tissue: Tonsil , Appendix, Placenta

Staining: Membranous



Presentation:

Mouse Monoclonal antibody in TBS, pH 7.6, containing 1% BSA and 0.09% sodium azide.
Protein concentration: 0,2-0,3mg/ml.

Application and suggested dilutions:

Pretreatment: Heat induced epitope retrieval in 10 mM citrate buffer , pH6.0, or in 50 mM Tris buffer pH9.5, for 20 minutes is required for IHC staining on formalin-fixed, paraffin embedded tissue sections.

- Immunohistochemical staining of formaline-fixed, paraffin embedded tissue section (dilution up to 1:100)

The optimal dilution for a specific application should be determined by the investigator.

Note: Dilute the antibody in 10% normal goat serum followed by a goat anti-mouse secondary antibody based detection is recommended

Storage & Stability: Store at 2-8 °C. Do not use after expiration date printed on the vial.