

## CD 20 (Clone L26)

### Specification:

This antibody reacts with a formalin-resistant intracytoplasmic epitope found in the majority of B cells and now considered to be the CD20 antigen, a pan-B cell marker. The antibody primarily recognizes a 33 kD polypeptide B cell component and also a minor 30 kD cellular antigen. The staining pattern is consistent with pan-B reactivity, producing staining for B cells in lymphoid and peripheral blood tissue. This antibody intensely stains germinal centers and B immunoblasts in lymphoid tissue. The L26 antibody is widely regarded as the most selective B cell marker currently available. L26 has shown no cross-reactivity with nonlymphoid tissues and there are several studies demonstrating its sensitivity and specificity in formalin-fixed, paraffin-embedded tissues. Studies have demonstrated that, in cases of lymphocyte predominant Hodgkin's lymphomas, L&H variants of Reed-Sternberg cells show a strong L26 reactive pattern that is distinctive from other Reed-Sternberg variants. L26 may prove to be a useful marker for this particular subset of Hodgkin's lymphomas.

### Availability:

Catalog No.	Contents	Volume
ILM 30211 C1	CD 20	1,0 ml

**Intended use:** For research use only

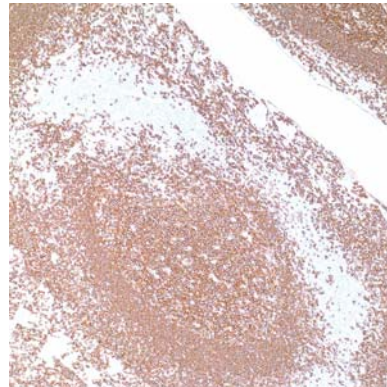
**Clone:** L26

**Species of origin:** Mouse

**Isotype:** IgG2a Kappa

**Controle Tissue:** Tonsil, Hodgkin lymphomas

**Staining:** Membrane and some cytoplasm for B cells



### Presentation:

Mouse Monoclonal antibody in TBS, pH 7.6, containing 1% BSA and 0.09% sodium azide.  
Protein concentration: 10-15mg/ml.

### Application and suggested dilutions:

Pretreatment: Heat induced epitope retrieval in 10 mM citrate buffer, pH6.0, or in 50 mM Tris buffer pH9.5, for 20 minutes is required for IHC staining on formalin-fixed, paraffin embedded tissue sections.

- Immunohistochemical staining of formaline-fixed, paraffin embedded tissue section (dilution up to 1:200)

The optimal dilution for a specific application should be determined by the investigator.

**Note:** Dilute the antibody in 10% normal goat serum followed by a goat anti-mouse secondary antibody based detection is recommended

**Storage & Stability:** Store at 2-8 °C. Do not use after expiration date printed on the vial.