

C erb-2 / HER-2 (Clone TAB250)

Specification:

This antibody is designed for the specific localization of Her-2/neu gene product (also called c-erbB-2) in formalin-fixed, paraffin-embedded tissue sections. It is intended for in vitro diagnostic use.

Her-2/neu (c-erb-B2) gene product is a 185 KD transmembrane glycoprotein associated with tyrosine kinase activity. The antibody CB11 is directed against the internal domain of this oncoprotein. Approximately 20-30% cases of breast cancer show an amplification and/or overexpression of Her-2 in tumor cells. Since the availability of therapy to Her-2 target, the lab testing of Her-2/neu in breast carcinoma has become very important in patient care. 15-30% cases of invasive ductal cancers, 90% of ductal carcinoma in situ and almost all cases of Paget's disease were found to be Her-2 positive by different researchers.

Availability:

Catalog No.	Contents	Volume
ILM 92111 C1	C erb-2 / HER-2	1,0 ml

Intended use: For research use only

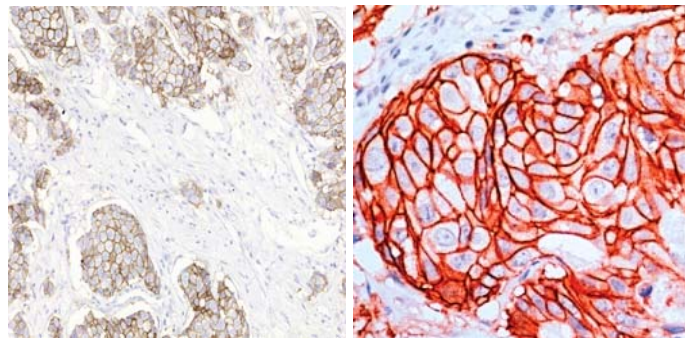
Clone: TAB250

Species of origin: Mouse

Isotype: IgG

Control Tissue: Breast carcinoma

Staining: Cell membrane



Presentation:

Mouse Monoclonal antibody in TBS, pH 7.6, containing 1% BSA and 0.09% sodium azide. Protein concentration: 10-15mg/ml.

Application and suggested dilutions:

Pretreatment: Heat induced epitope retrieval in 10 mM citrate buffer, pH6.0, or in 50 mM Tris buffer pH9.5, for 20 minutes is required for IHC staining on formalin-fixed, paraffin embedded tissue sections.

- Immunohistochemical staining of formaline-fixed, paraffin embedded tissue section (dilution up to 1:200)

The optimal dilution for a specific application should be determined by the investigator.

Note: Dilute the antibody in 10% normal goat serum followed by a goat anti-mouse secondary antibody based detection is recommended

Storage & Stability: Store at 2-8 °C do not freeze. Do not use after expiration date printed on the vial.